

Piesa T

TCL



Descriere

Piesa tip T din segmente faltuite, prevazuta cu garnituri.

Cod comanda

Cod produs:

TCL aaa bbb

Cod

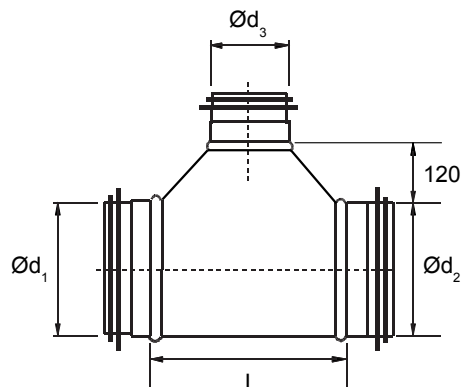
$\text{\O}d_1$

$\text{\O}d_3$

$\text{\O}d_2^*$

*daca nu este specificat, $\text{\O}d_1 = \text{\O}d_2$

Dimensiuni



| $\text{\O}d_1$ nom | $\text{\O}d_3$ nom | L | kg |
|-----------------------|-----------------------|-----|------|
| ** 100 | 100 | | |
| 100 | 125 | 365 | 0.55 |
| 100 | 150 | 390 | 0.65 |
| 100 | 160 | 400 | 0.65 |
| ** 125 | 100 | | |
| ** 125 | 125 | | |
| 125 | 150 | 390 | 0.75 |
| 125 | 160 | 400 | 0.80 |
| 125 | 200 | 440 | 1.10 |
| ** 150 | 100 | | |
| ** 150 | 125 | | |
| ** 150 | 150 | | |
| 150 | 200 | 440 | 1.10 |
| 150 | 250 | 490 | 1.20 |
| ** 160 | 100 | | |
| ** 160 | 125 | | |
| ** 160 | 160 | | |
| 160 | 200 | 440 | 1.15 |
| 160 | 250 | 490 | 1.25 |
| ** 200 | 100 | | |
| ** 200 | 125 | | |
| ** 200 | 150 | | |
| ** 200 | 160 | | |
| 200 | 200 | | |
| 200 | 250 | 490 | 1.60 |
| 200 | 300 | 540 | 1.90 |
| 200 | 315 | 555 | 2.00 |
| 200 | 355 | 595 | 2.10 |
| 200 | 400 | 640 | 2.30 |

**disponibile in varianta TCPL (piesa T presata)

Piesa T

TCL

Dimensiuni

| $\varnothing d_1$ nom | $\varnothing d_3$ nom | L | kg |
|--------------------------|--------------------------|-----|------|
| ** 250 | 100 | 340 | 1.10 |
| ** 250 | 125 | 365 | 1.20 |
| 250 | 150 | 390 | 1.40 |
| 250 | 160 | 400 | 1.50 |
| 250 | 200 | 440 | 1.90 |
| 250 | 250 | 490 | 2.20 |
| 250 | 300 | 540 | 2.40 |
| 250 | 315 | 555 | 2.50 |
| 250 | 355 | 595 | 3.20 |
| 250 | 400 | 640 | 3.60 |
| 250 | 450 | 690 | 3.90 |
| ** 300 | 100 | 340 | 1.25 |
| ** 300 | 125 | 365 | 1.40 |
| 300 | 150 | 390 | 1.60 |
| 300 | 160 | 400 | 1.65 |
| 300 | 200 | 440 | 2.20 |
| 300 | 250 | 490 | 2.50 |
| 300 | 300 | 540 | 2.90 |
| 300 | 355 | 595 | 3.70 |
| 300 | 400 | 640 | 4.10 |
| 300 | 450 | 690 | 5.40 |
| 300 | 500 | 740 | 6.10 |
| ** 315 | 100 | 340 | 1.30 |
| ** 315 | 125 | 365 | 1.50 |
| 315 | 150 | 390 | 1.70 |
| 315 | 160 | 400 | 1.75 |
| 315 | 200 | 440 | 2.30 |
| 315 | 250 | 490 | 2.60 |
| 315 | 315 | 555 | 3.00 |
| 315 | 355 | 595 | 3.80 |
| 315 | 400 | 640 | 4.20 |
| 315 | 450 | 690 | 5.60 |
| 315 | 500 | 740 | 6.20 |
| 355 | 125 | 365 | 2.15 |
| 355 | 150 | 390 | 2.25 |
| 355 | 160 | 400 | 2.30 |
| 355 | 200 | 440 | 2.80 |
| 355 | 250 | 490 | 3.30 |
| 355 | 300 | 540 | 3.70 |
| 355 | 315 | 555 | 3.80 |
| 355 | 355 | 595 | 4.40 |
| 355 | 400 | 640 | 4.80 |
| 355 | 450 | 690 | 6.30 |

| $\varnothing d_1$ nom | $\varnothing d_3$ nom | L | kg |
|--------------------------|--------------------------|------|------|
| 355 | 500 | 740 | 6.80 |
| 355 | 560 | 800 | 7.50 |
| 400 | 150 | 390 | 2.70 |
| 400 | 160 | 400 | 2.80 |
| 400 | 200 | 440 | 3.40 |
| 400 | 250 | 490 | 3.80 |
| 400 | 300 | 540 | 4.40 |
| 400 | 315 | 555 | 4.50 |
| 400 | 355 | 595 | 5.00 |
| 400 | 400 | 640 | 5.50 |
| 400 | 450 | 690 | 7.10 |
| 400 | 500 | 740 | 7.60 |
| 400 | 560 | 800 | 8.30 |
| 400 | 630 | 870 | 8.70 |
| 450 | 200 | 440 | 4.70 |
| 450 | 250 | 490 | 5.30 |
| 450 | 300 | 540 | 6.00 |
| 450 | 315 | 555 | 6.10 |
| 450 | 355 | 595 | 6.80 |
| 450 | 400 | 640 | 7.40 |
| 450 | 450 | 690 | 8.00 |
| 450 | 500 | 740 | 8.70 |
| 450 | 560 | 800 | 9.40 |
| 450 | 630 | 870 | 10.1 |
| 450 | 710 | 950 | 13.5 |
| 500 | 200 | 440 | 5.30 |
| 500 | 250 | 490 | 5.80 |
| 500 | 300 | 540 | 6.60 |
| 500 | 315 | 555 | 6.70 |
| 500 | 355 | 595 | 7.50 |
| 500 | 400 | 640 | 8.00 |
| 500 | 450 | 690 | 8.70 |
| 500 | 500 | 740 | 9.40 |
| 500 | 560 | 800 | 10.1 |
| 500 | 630 | 870 | 11.0 |
| 500 | 710 | 950 | 14.5 |
| 500 | 800 | 1040 | 15.9 |
| 560 | 200 | 440 | 5.80 |
| 560 | 250 | 490 | 6.50 |
| 560 | 300 | 540 | 7.30 |
| 560 | 315 | 555 | 7.40 |
| 560 | 355 | 595 | 8.20 |
| 560 | 400 | 640 | 8.80 |

Piesa T

TCL

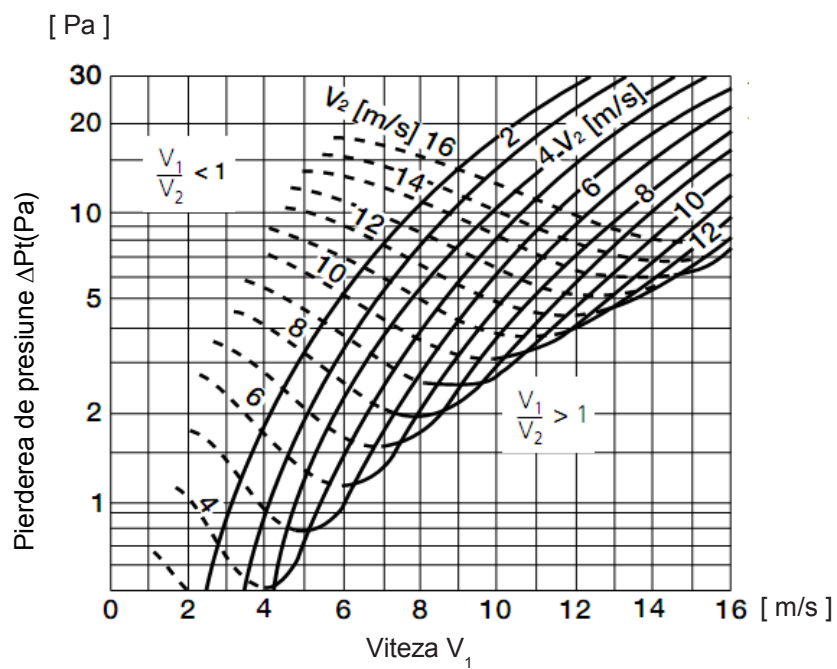
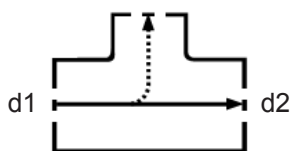
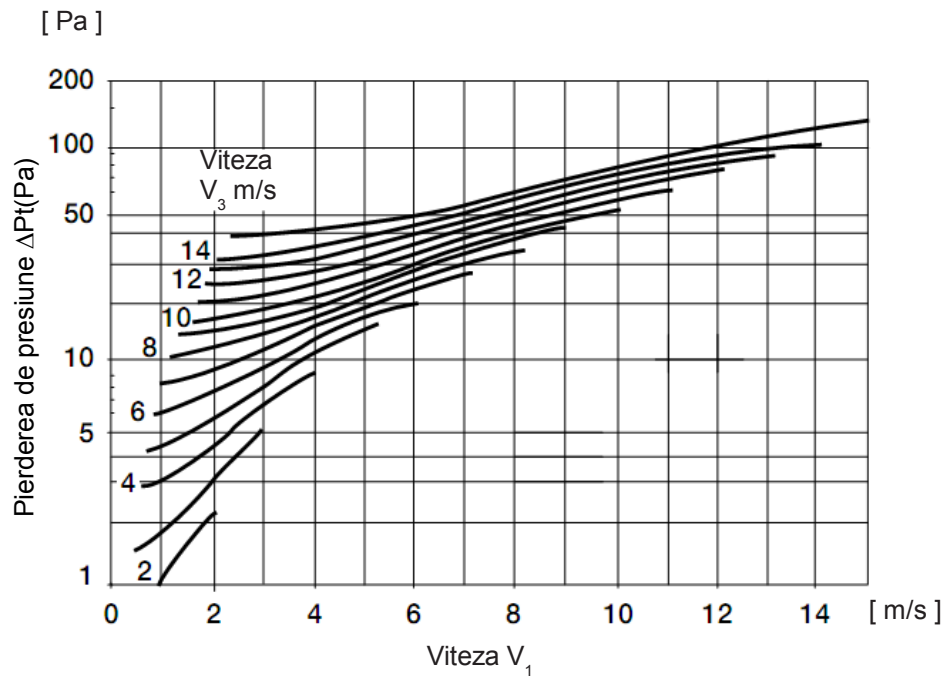
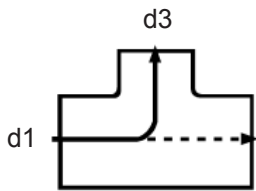
Dimensiuni

| $\varnothing d_1$ nom | $\varnothing d_3$ nom | L | kg |
|--------------------------|--------------------------|------|------|
| 560 | 450 | 690 | 9.60 |
| 560 | 500 | 740 | 10.3 |
| 560 | 560 | 800 | 11.1 |
| 560 | 630 | 870 | 12.0 |
| 560 | 710 | 950 | 15.7 |
| 560 | 800 | 1040 | 17.2 |
| 630 | 200 | 440 | 6.50 |
| 630 | 250 | 490 | 7.20 |
| 630 | 300 | 540 | 8.10 |
| 630 | 315 | 555 | 8.30 |
| 630 | 355 | 595 | 9.20 |
| 630 | 400 | 640 | 9.80 |
| 630 | 450 | 690 | 10.6 |
| 630 | 500 | 740 | 11.4 |
| 630 | 560 | 800 | 12.3 |
| 630 | 630 | 870 | 13.2 |
| 630 | 710 | 950 | 17.2 |
| 630 | 800 | 1040 | 18.8 |
| 710 | 250 | 490 | 10.6 |
| 710 | 300 | 540 | 11.8 |
| 710 | 315 | 555 | 12.0 |
| 710 | 355 | 595 | 13.1 |
| 710 | 400 | 640 | 14.0 |
| 710 | 450 | 690 | 15.0 |
| 710 | 500 | 740 | 16.0 |
| 710 | 560 | 800 | 17.0 |
| 710 | 630 | 870 | 18.2 |
| 710 | 710 | 950 | 20.3 |
| 710 | 800 | 1040 | 22.0 |
| 800 | 250 | 490 | 11.9 |
| 800 | 300 | 540 | 13.2 |
| 800 | 315 | 555 | 13.5 |
| 800 | 355 | 595 | 14.7 |
| 800 | 400 | 640 | 15.6 |
| 800 | 450 | 690 | 16.7 |
| 800 | 500 | 740 | 17.8 |
| 800 | 560 | 800 | 18.9 |
| 800 | 630 | 870 | 20.2 |
| 800 | 710 | 950 | 22.4 |
| 800 | 800 | 1040 | 24.2 |

Piesa T

TCL

Date tehnice

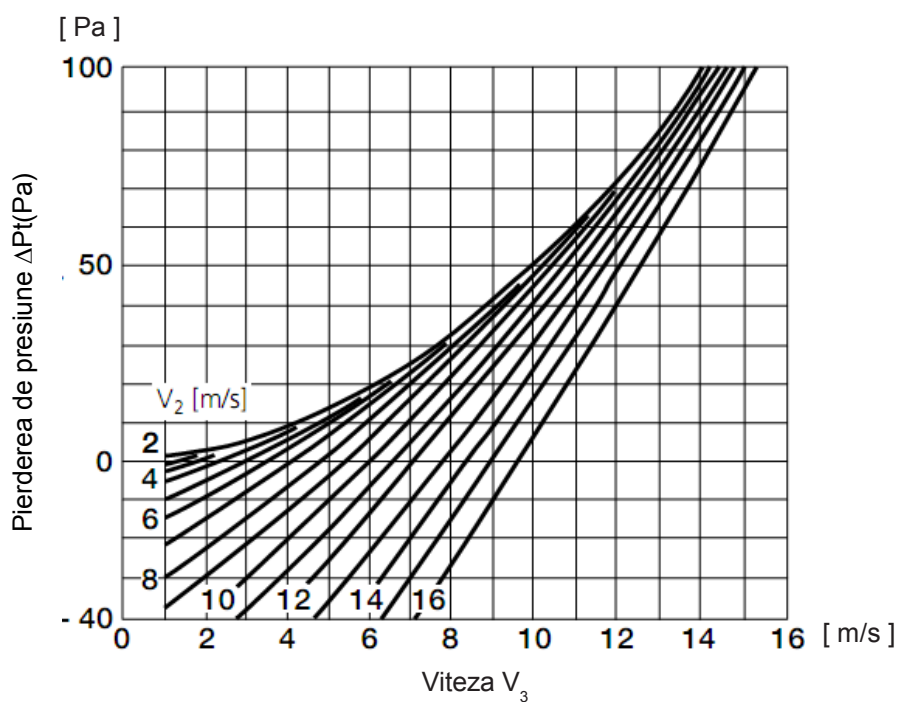
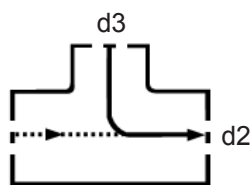
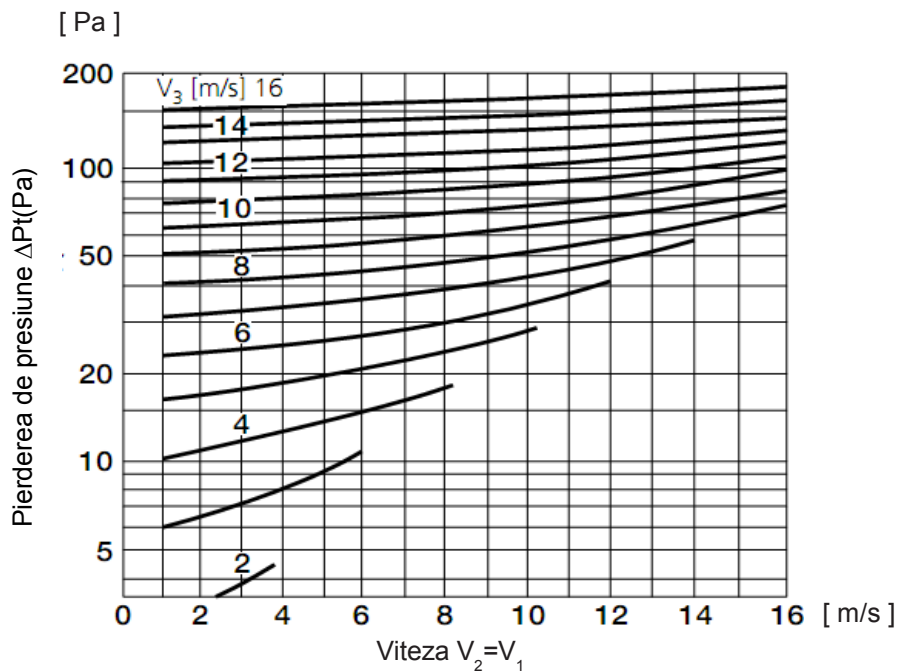
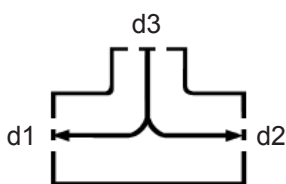


V_1 = viteza medie in d_1
 V_2 = viteza medie in d_2
 V_3 = viteza medie in d_3

Piesa T

TCL

Date tehnice

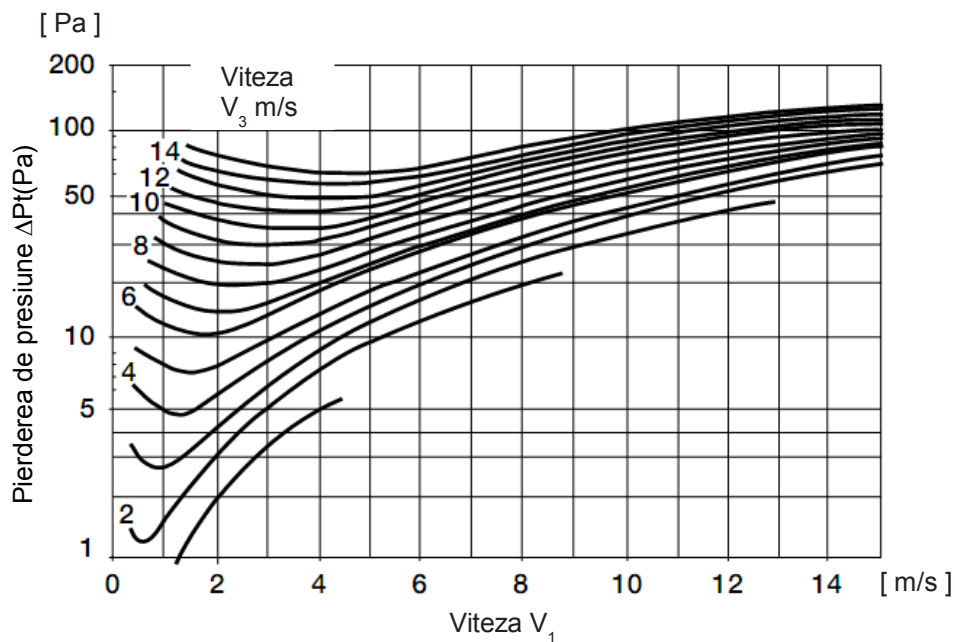
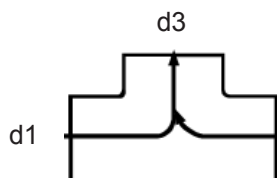
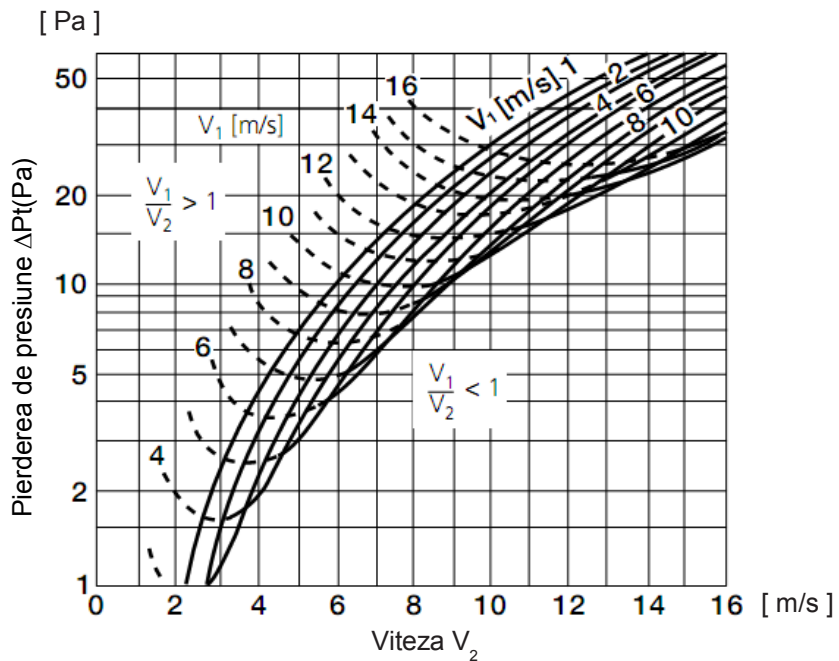
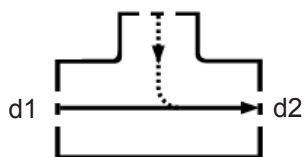


V_1 = viteza medie in d1
 V_2 = viteza medie in d2
 V_3 = viteza medie in d3

Piesa T

TCL

Date tehnice



V_1 = viteza medie in d1
 V_2 = viteza medie in d2
 V_3 = viteza medie in d3